

# *monty* 4200

Truck Tire Changer  
Spare Parts list



**HOFMANN®**



Date 08/12/09

# Figure 1 Baseframe

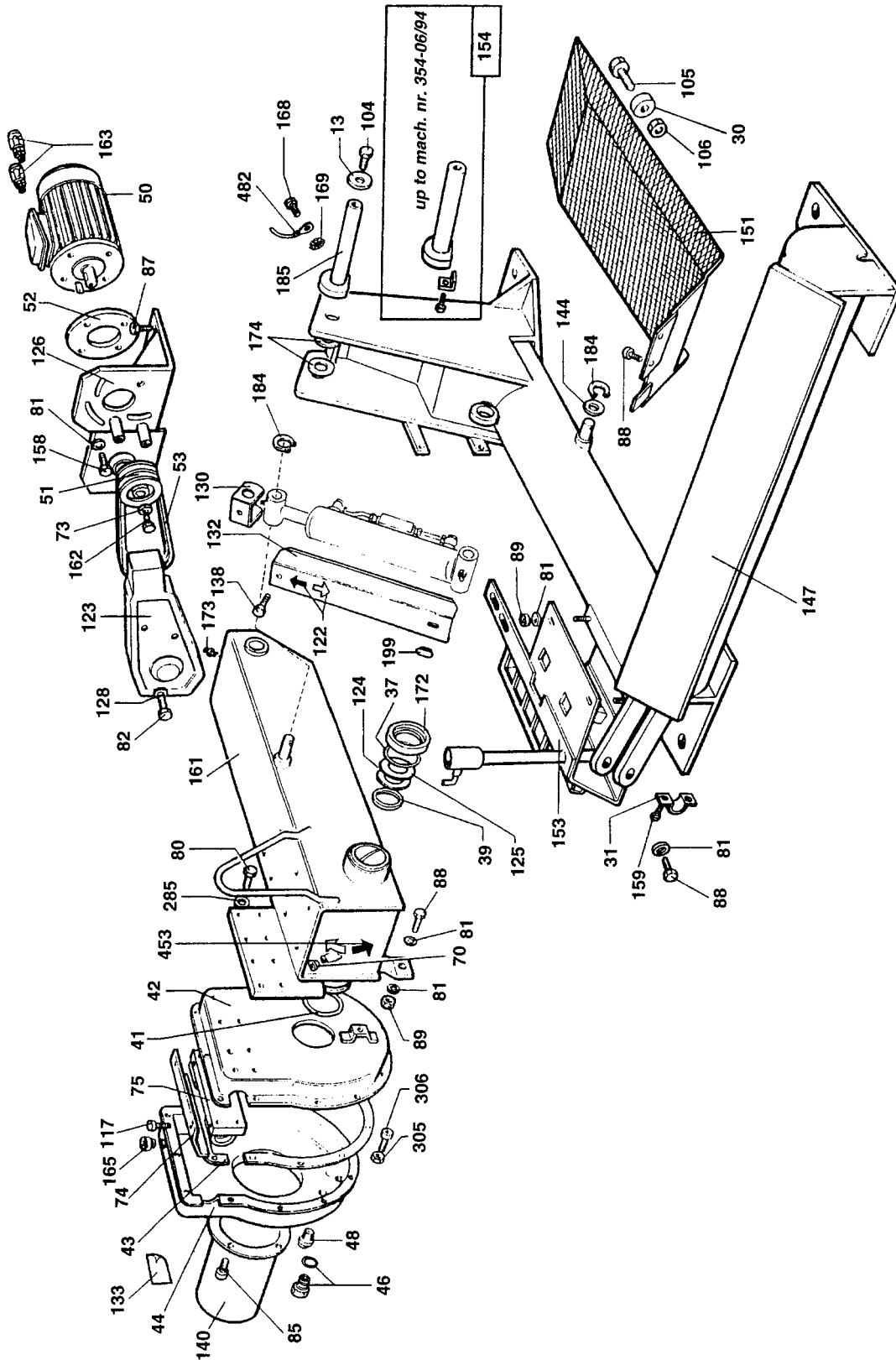
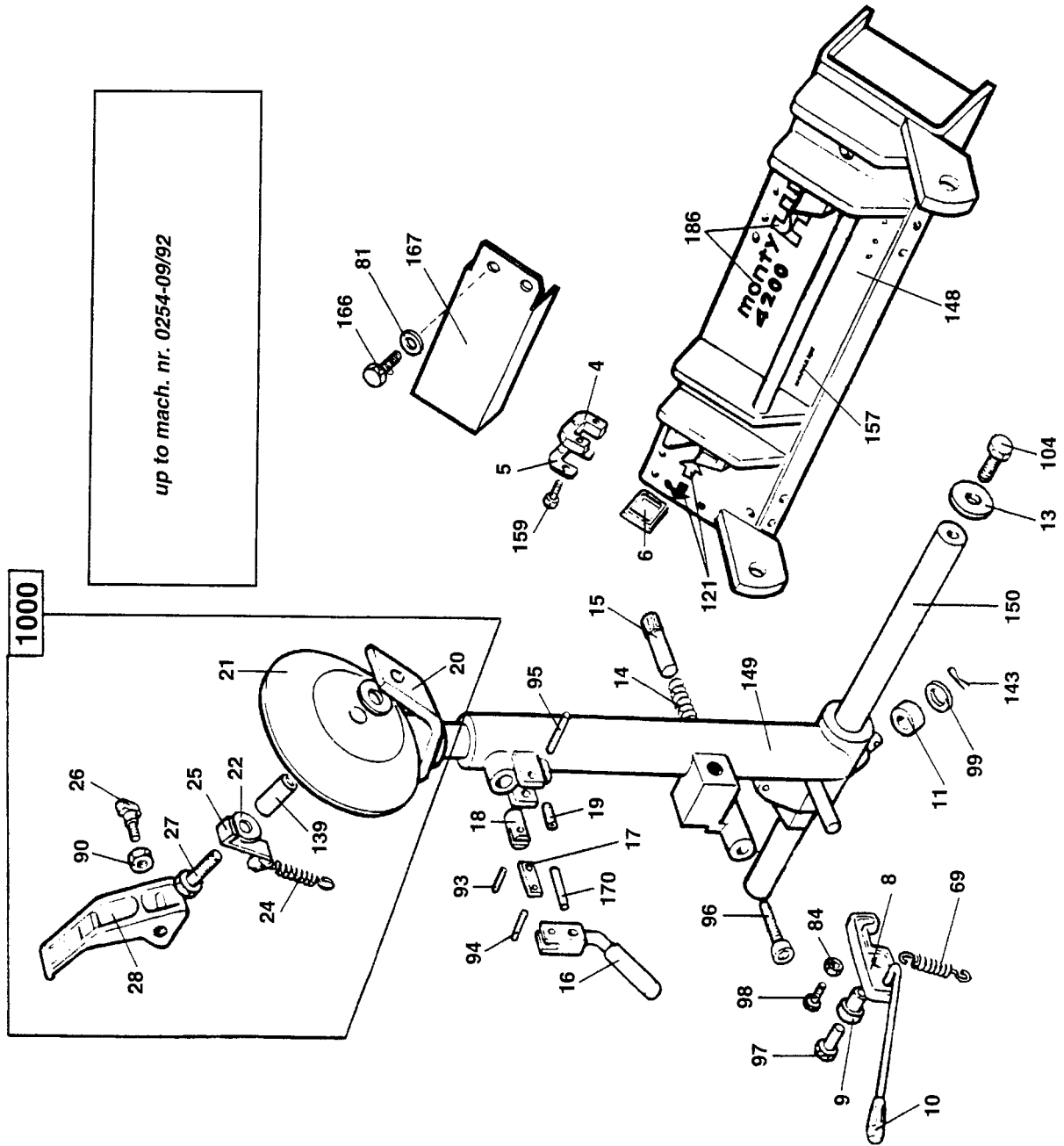


Figure 2A Carriage with Mounting Arm



# Figure 2B Carriage Mounting Arm

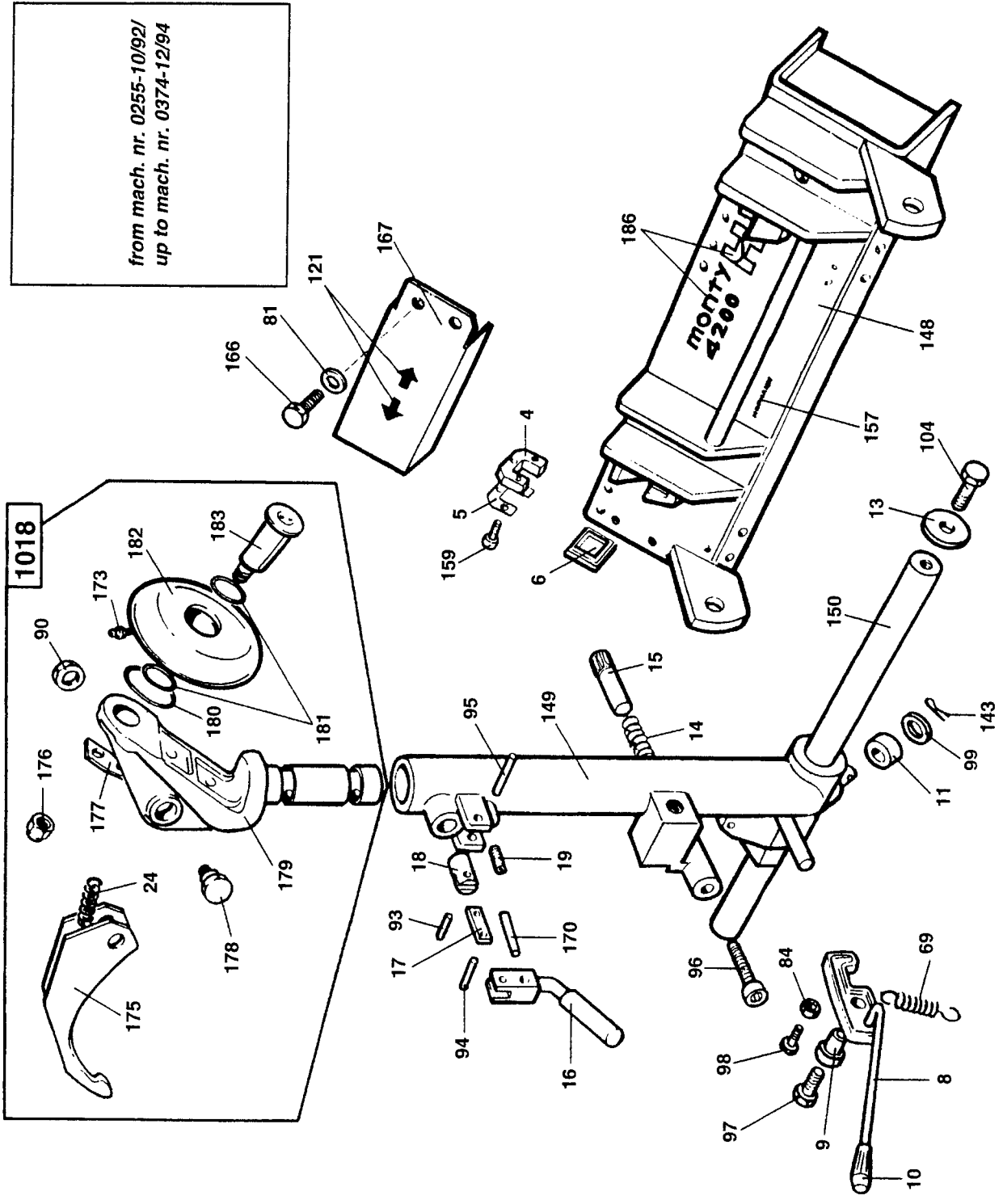
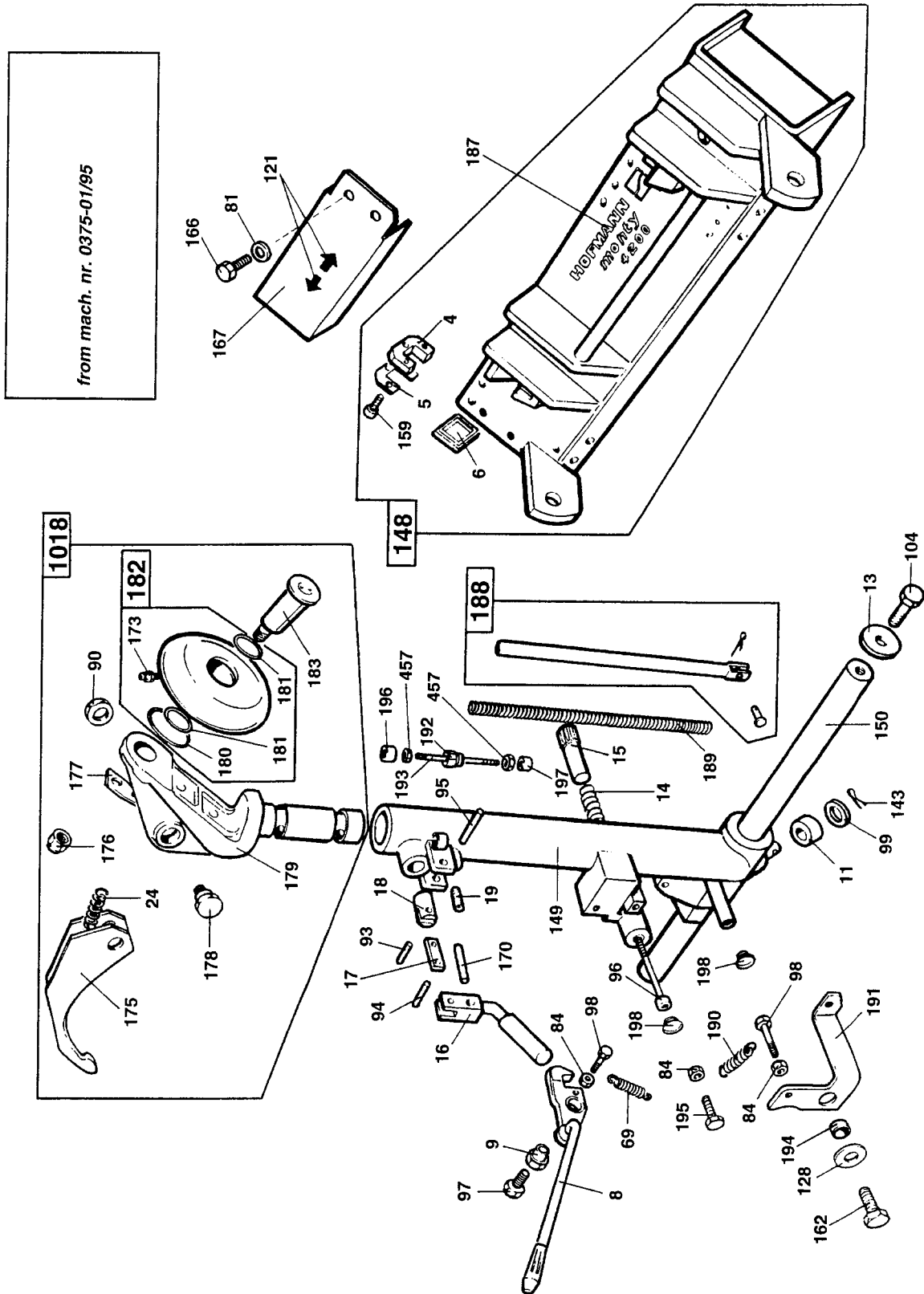
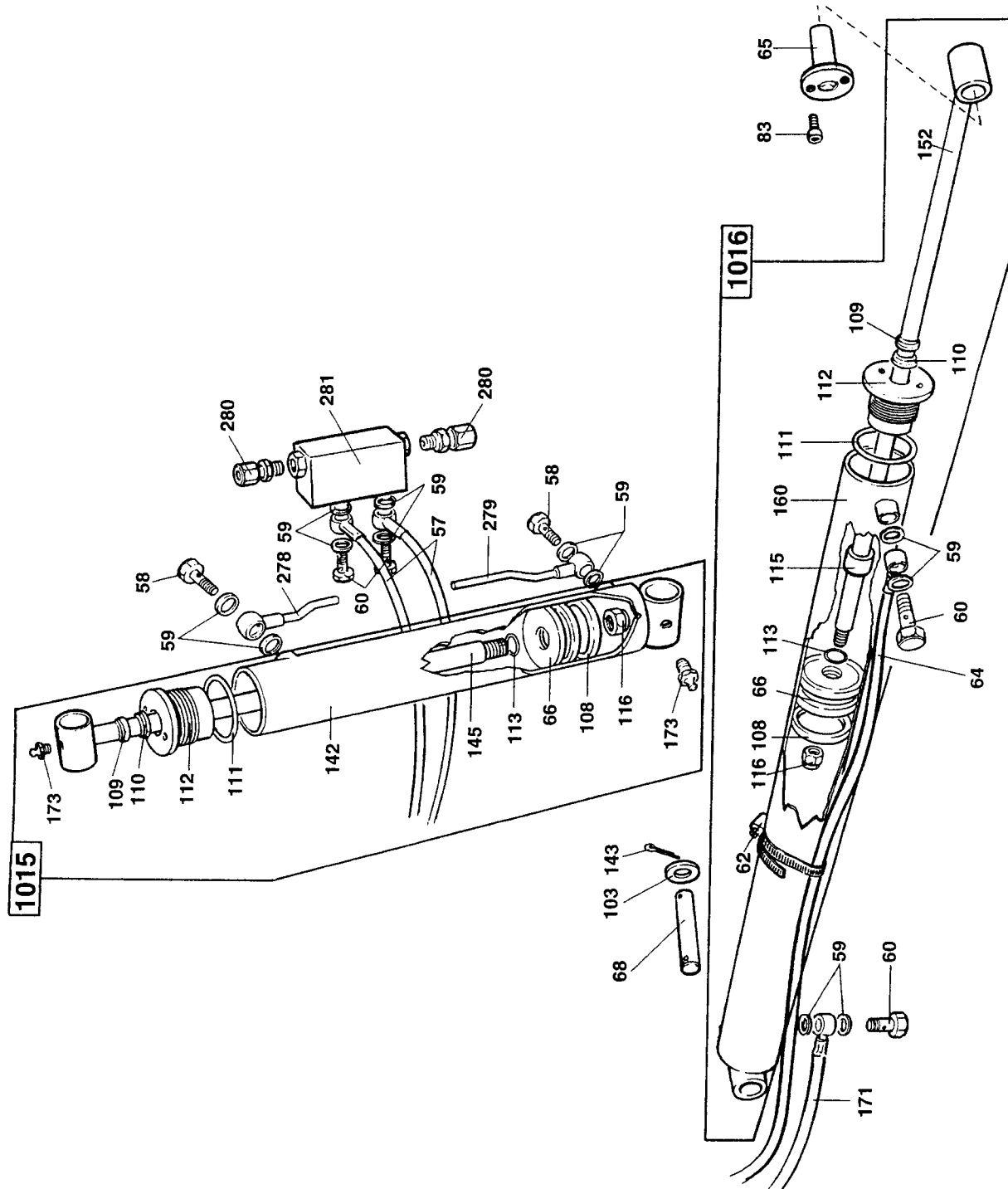


Figure 2C Carriage with Mounting Arm



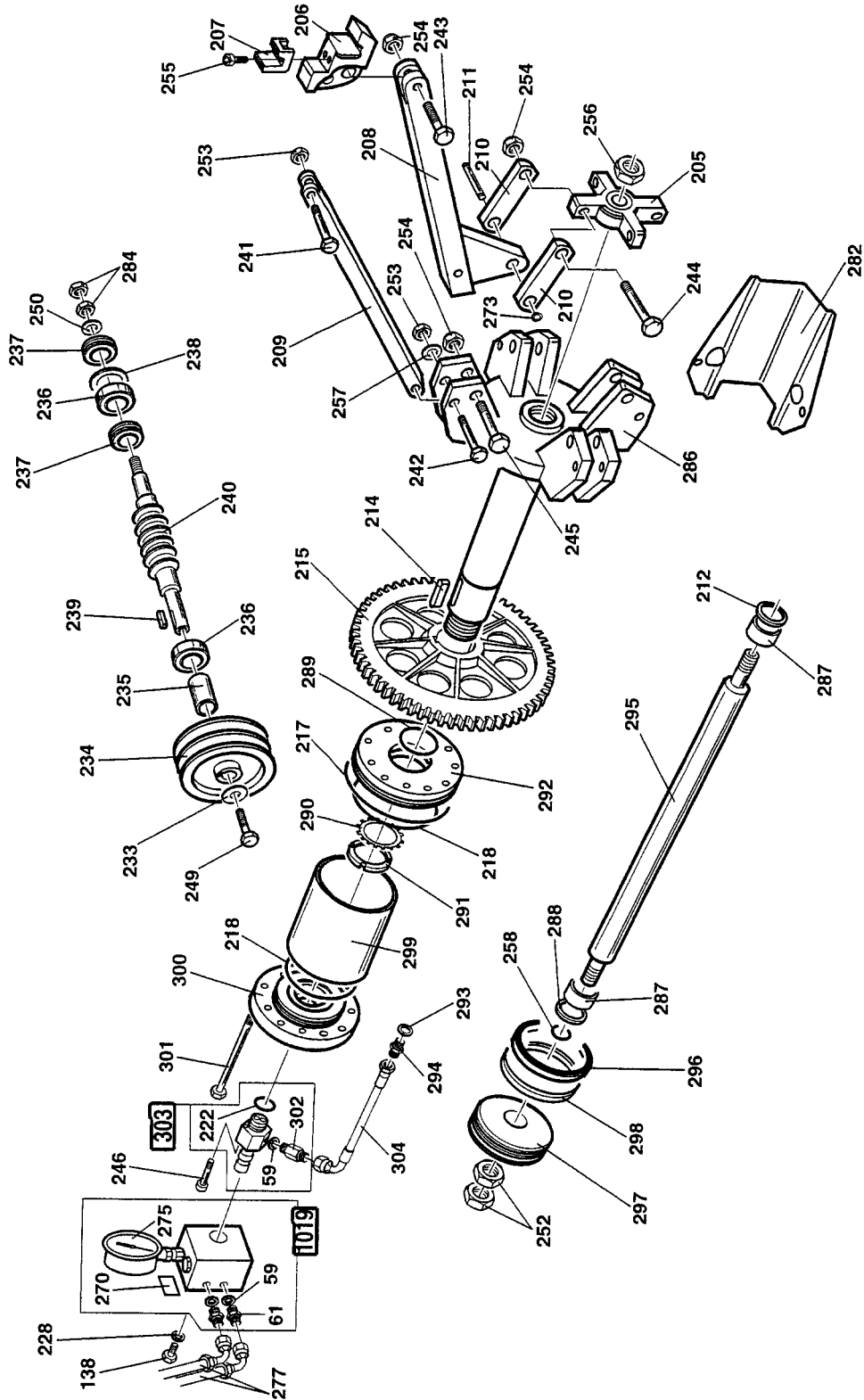
**Figure 3 Lifting Cylinder & Carriage Cylinder**





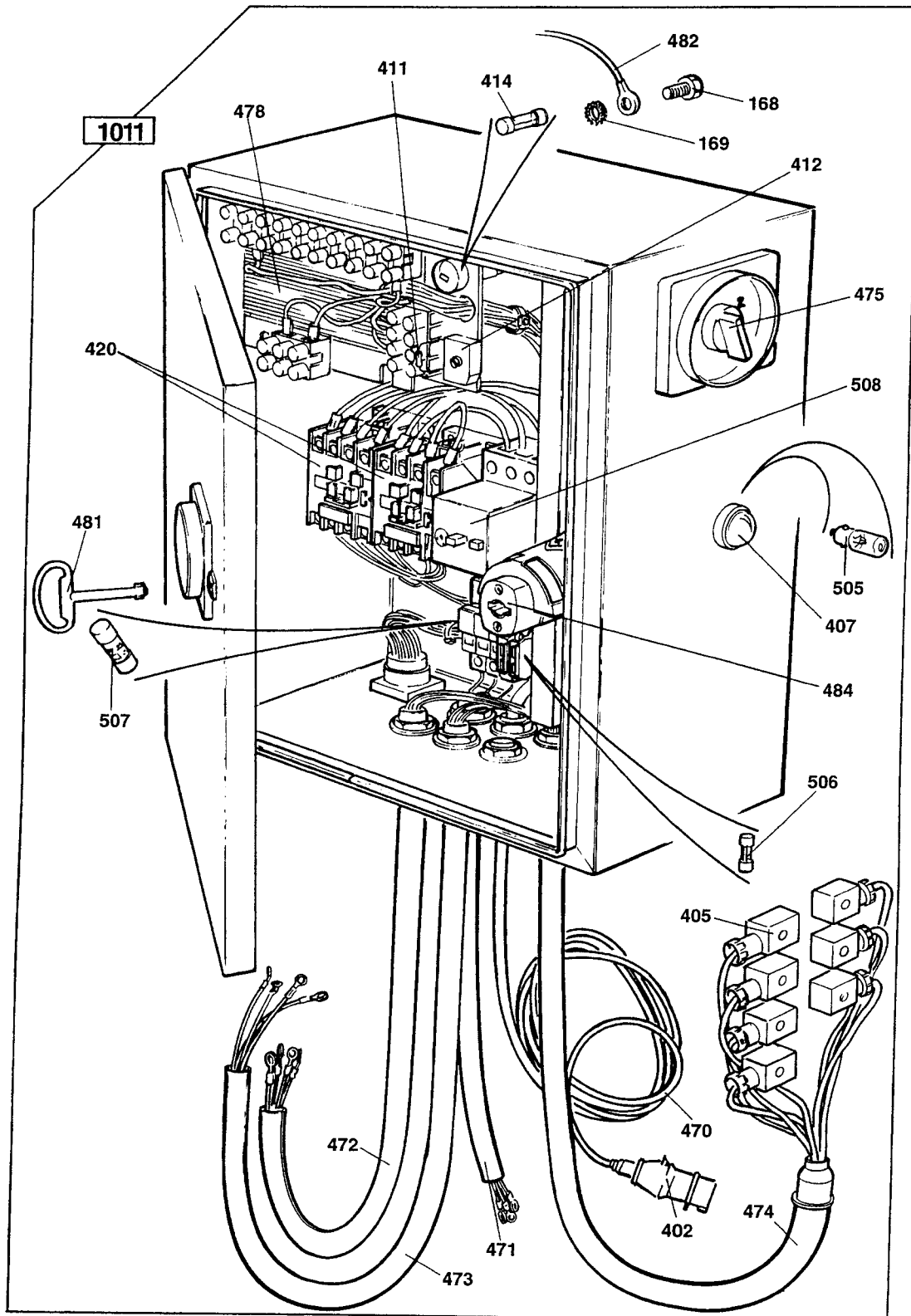
# Figure 4B Chuck Drive Unit

From machine #969 - 09/01



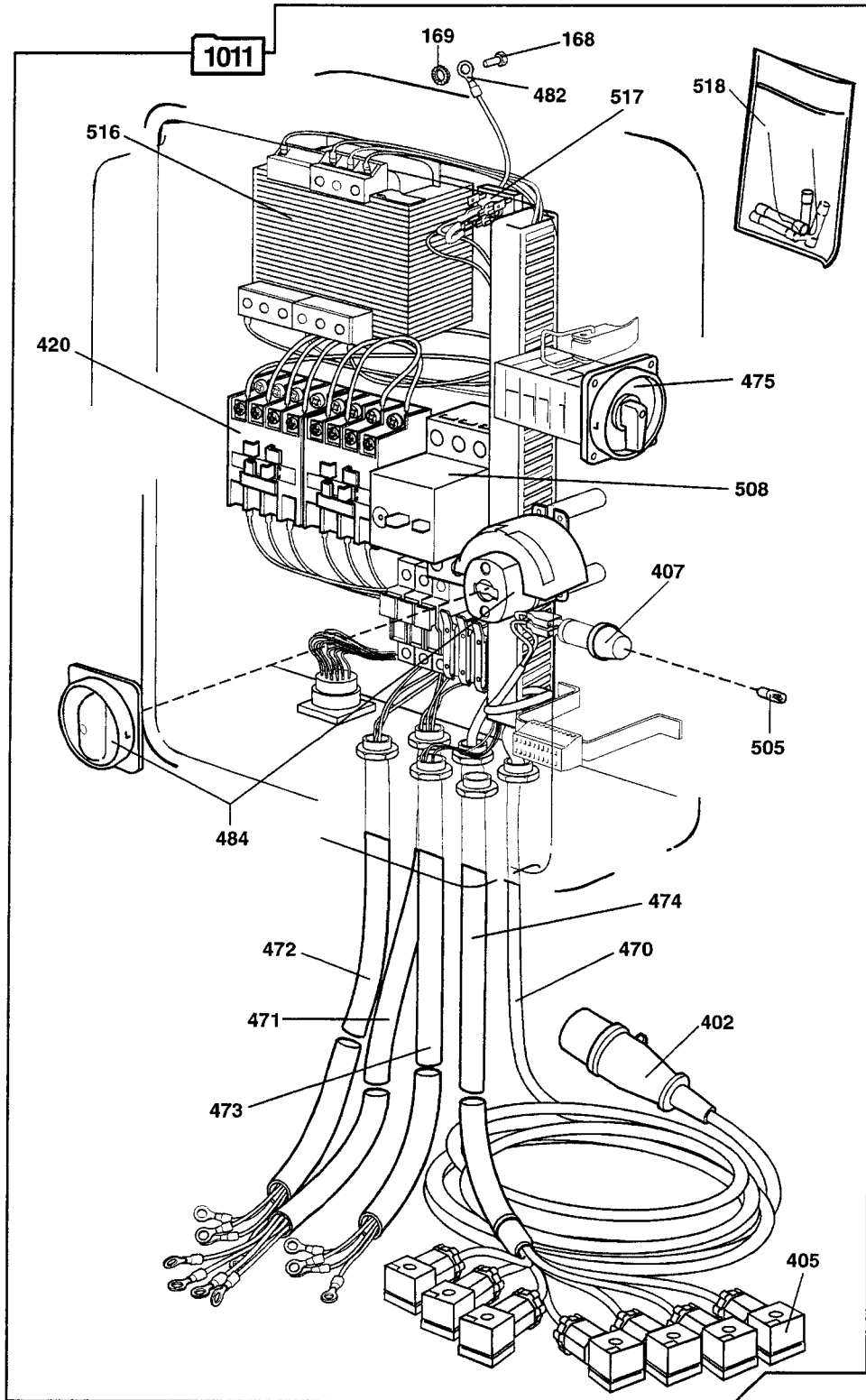


**Figure 5A Control Box**  
Up to machine #669 - 04/98

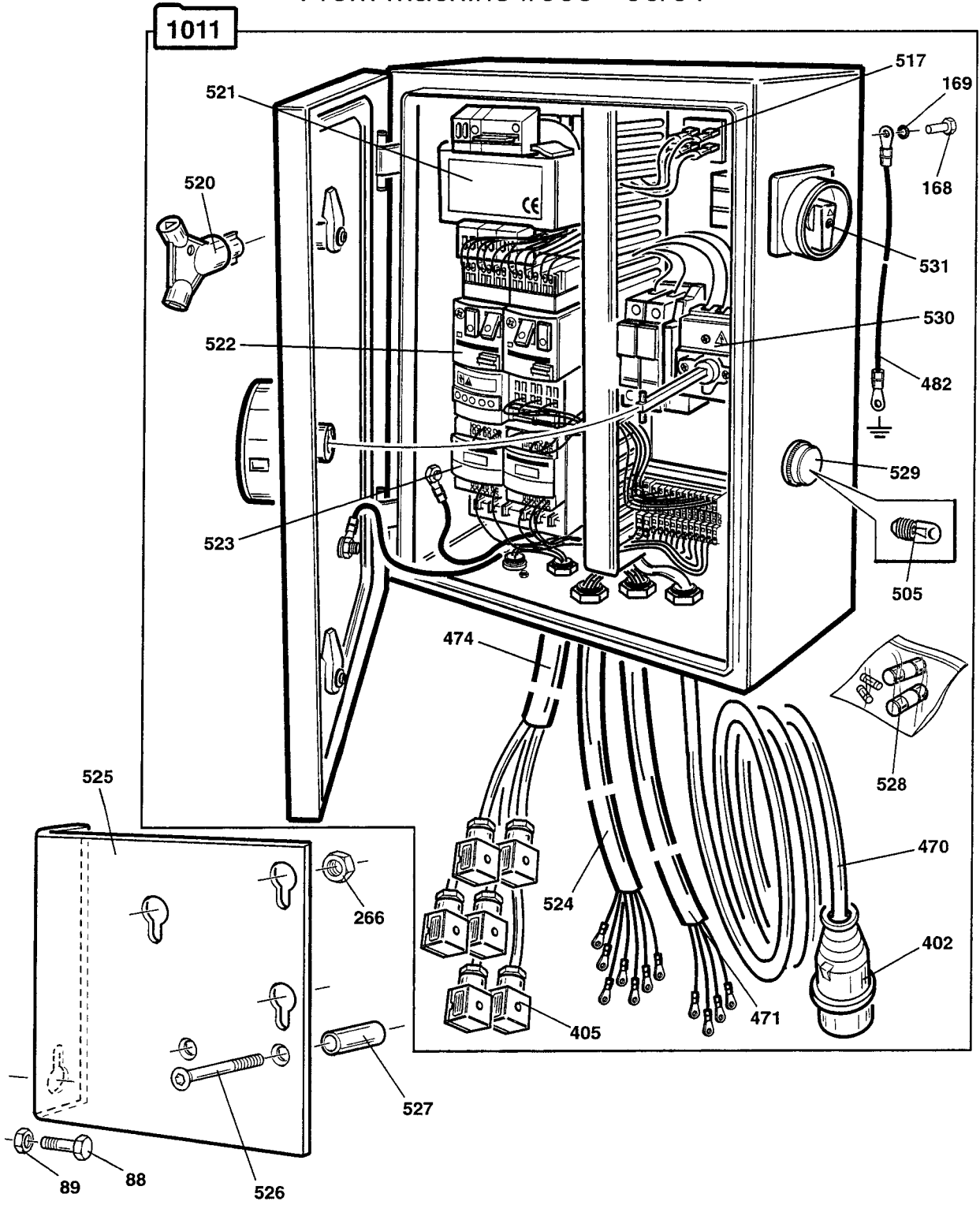


# Figure 5B Control Box

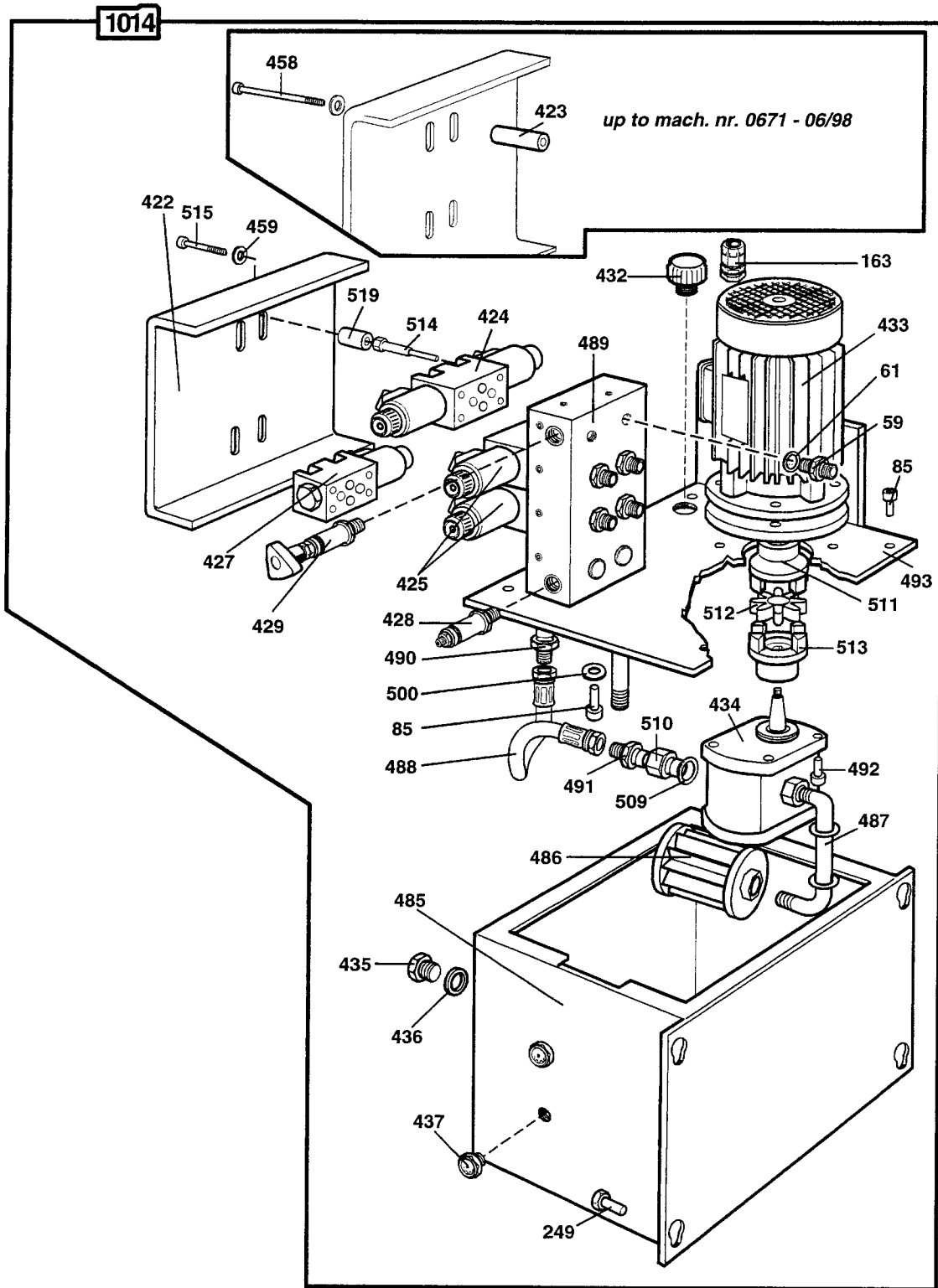
From machine #670 - 04/98 up to machine #954 - 04/01



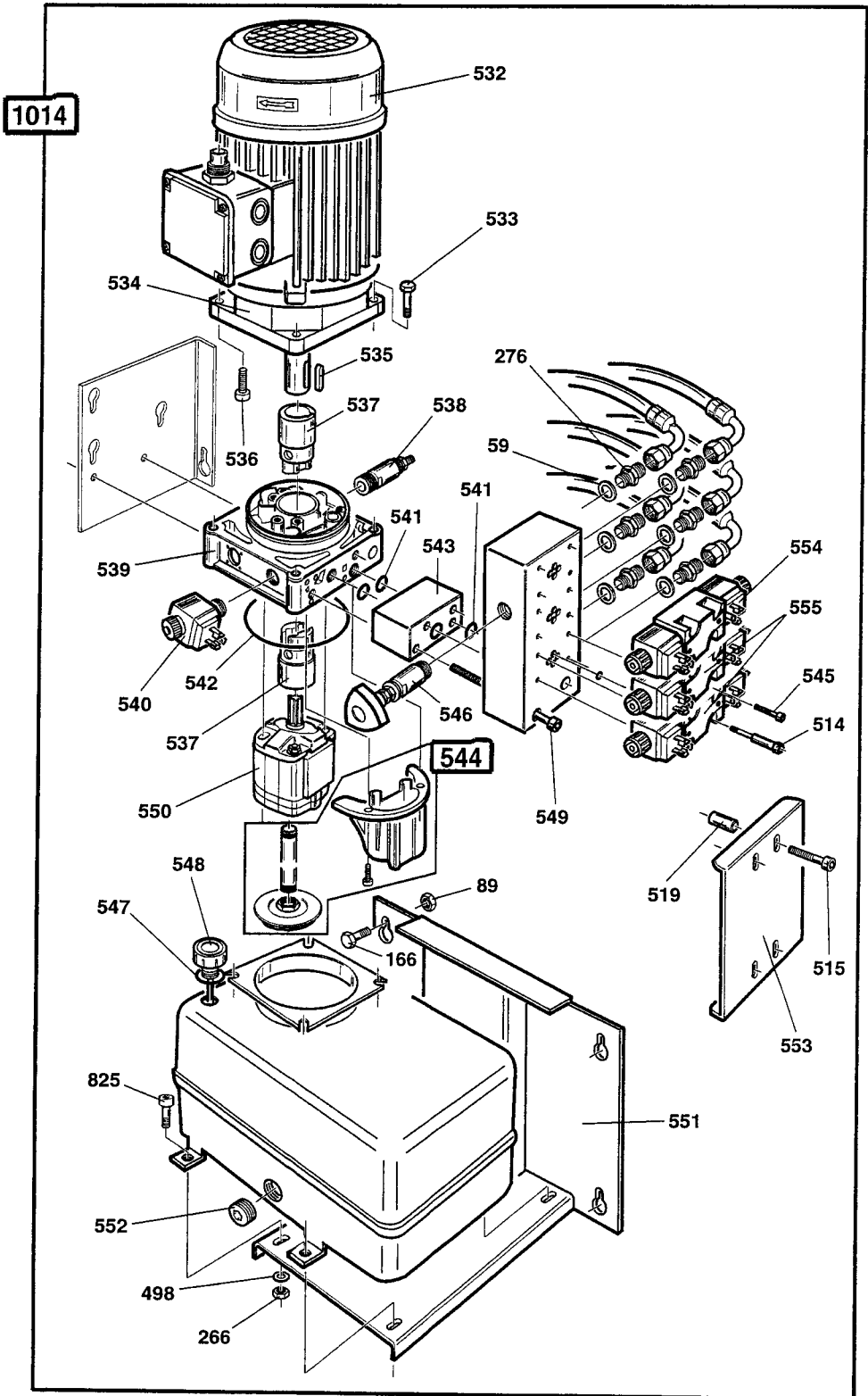
**Figure 5C Control Box**  
 From machine #955 - 06/01



**Figure 6A Hydraulic Unit**  
Up to machine #960 - 07/01

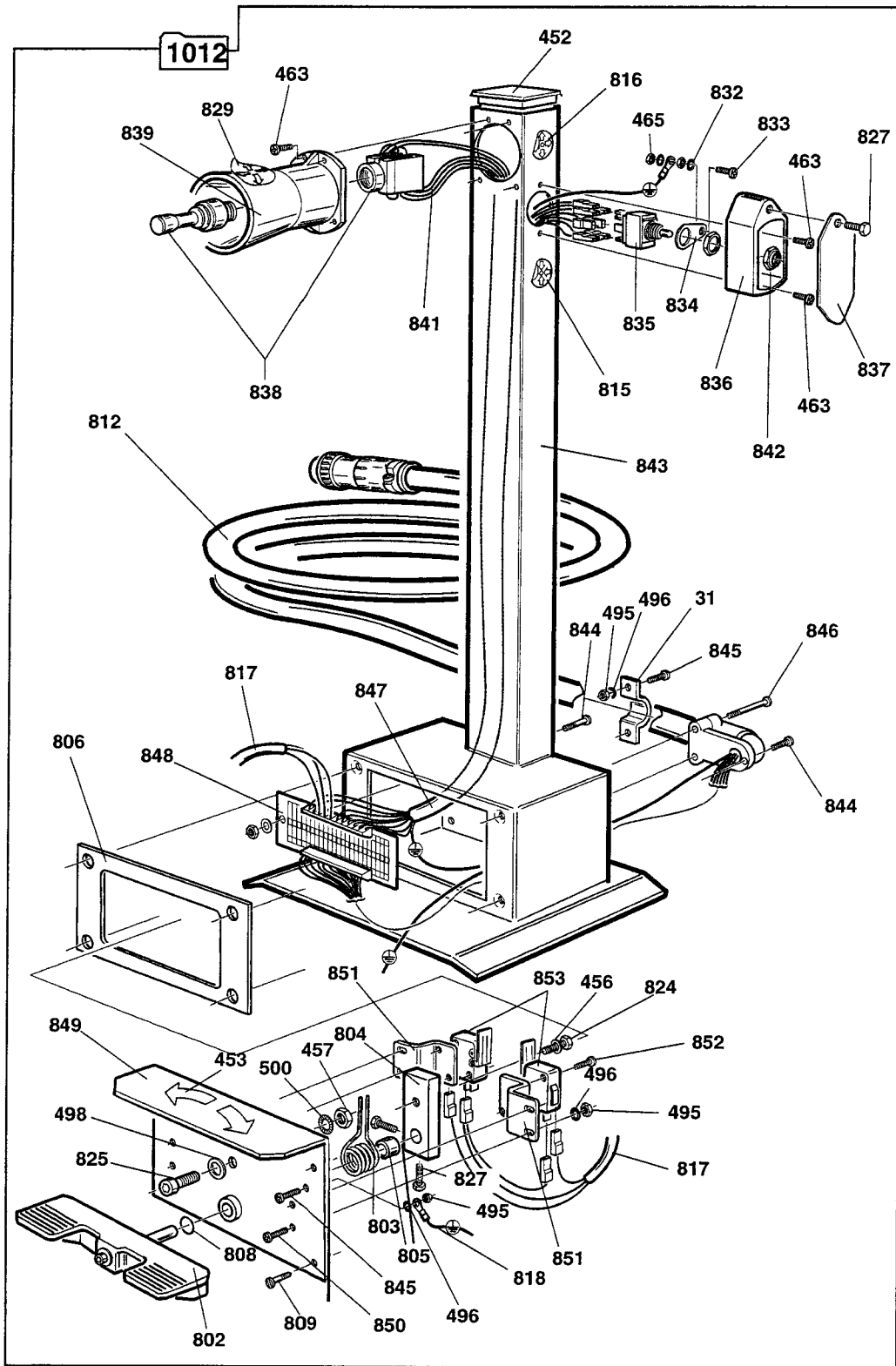


**Figure 6B Hydraulic Unit**  
 From machine #961 - 07/01

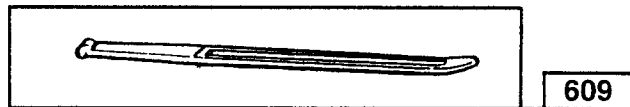
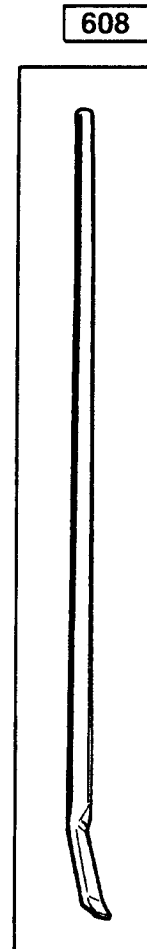
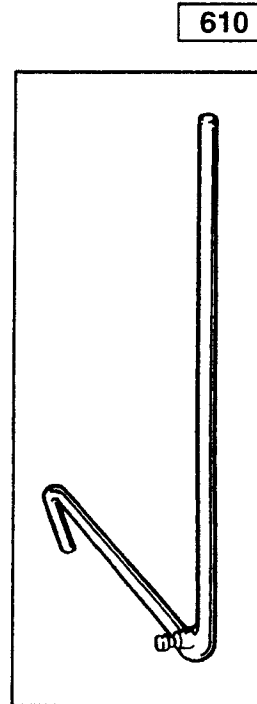
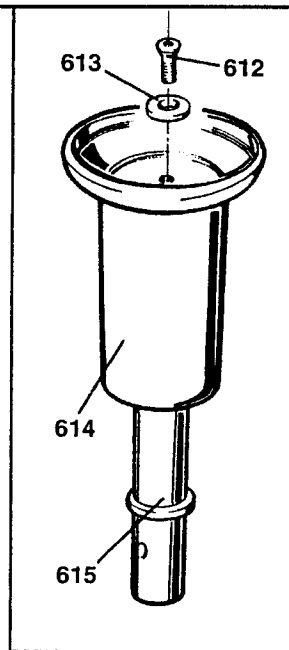
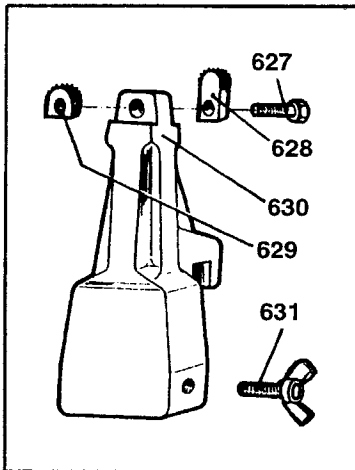
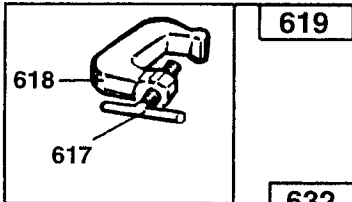
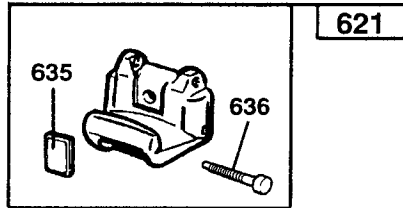
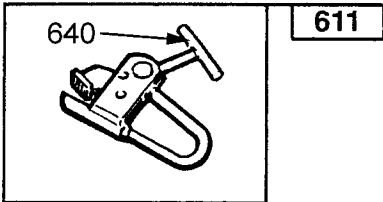
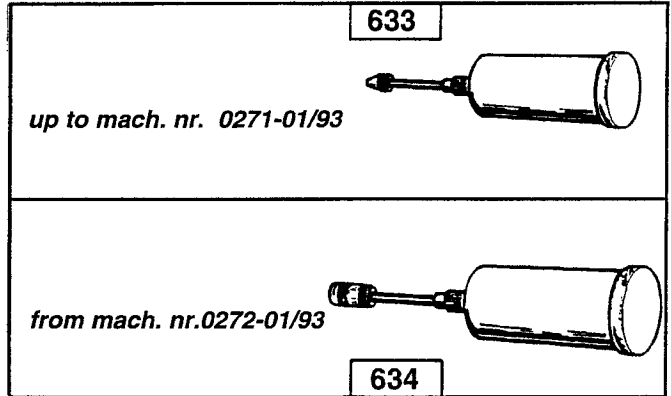
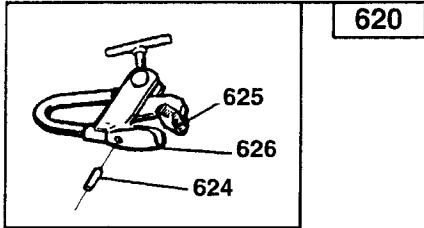




**Figure 7B Mobile Control Console**  
 From machine #917 - 01/01



# Figure 8 Accessories





<b>No.</b>	<b>Part No.</b>	<b>Description</b>	<b>HWT No.</b>
4	3305922	Scraper for carriage guide	1970200
5	3005923	Plate for carriage	1970249
6	3306008	Stop for carriage	1970250
8	2406026	Ratchet	1970252
9	3006293	Eccentric stud for ratchet	1970253
10	3306018	Handle	1970560
11	3006287	Roller stop for mounting arm	1970201
13	3006349	Limit washer for guide shaft	1970256
14	3006657	Compression spring for mounting arm	1970202
15	2406290	Arm ejector	1970257
16	3006289	Latch lever	1970258
17	3006285	Connecting piece for latch	1970259
18	3006286	Latch	1970260
19	3006288	Return spring for latch	1970203
20	2405987	Tool holder	1970261
21	2307613	Bead breaker	1970262
22	3005978	Washer d 60 x 35 x 1	1970263
24	3005977	Spring d 18 x 65 x 3.5	1970204
25	3005991	Hook for spring	1970265
26	2200435	Fulcrum pin for tool	1970205
27	3005976	Special screw M 20 x 1.5 x 96	1970206
28	2405985	Mounting tool	1970266
30	3306484	Roll	1970207
31	3006361	Cable holder band	1970268
37	3006387	Felt	1970274
39	4206405	Gasket FT 8090	1970208
41	4206386	O-ring 241	1970277
42	2406031	Rear cover for gearbox	1970278
43	3005973	Seal for gearbox	1970279
44	2201275	Front cover for gearbox	1972363
46	2200797	Gearbox plug	1970282
48A	4206398	Oil level indicator (up to mach. nr. 787 - 05/99)	1970284
48B	4216752	Oil level indicator (from mach. nr. 788 - 06/99)	1972417
50A	3-01059	Self centering chuck motor 380/415V. 3Ph. 50Hz.	1970286
50B	3-01056	Self-centering chuck motor 220/240V. 3Ph. 50Hz. (4294702)	1970172
50C	3-01058	Self centering chuck motor 380/415V. 3Ph. 60Hz. (4294704)	1970174
50D	3-01057	Self-centering chuck motor 220/240V. 3Ph. 60Hz. (4294703)	1970173
51	3006364	Belt pulley	1970287
52	3006363	Motor centering spacer	1970288
53	3-00649	V-belt 3V 300 (4206549)	1970209
57	3006266	Short connecting hose	1970210
58	4206030	Bolt 1/4"	1480700
59	4206391	Copper washer 1/4"	1970292
60	4206347	Bolt 1/4"	1970293
61	4206385	Nipple 1/4"- 1/4"	1970294

<b>No.</b>	<b>Part No.</b>	<b>Description</b>	<b>HWT No.</b>
62	4206356	Hose clamp 77-97	1970295
64	3006265	Long connecting hose for long cylinder	1970212
65	2106343	Carriage pin	1970296
66	3006924	Piston	1970297
68	3006348	Fixing pin for long cylinder	1970299
69	3005159	Spring	1970037
70	4206406	Plug d 13	1970300
73	3006360	Washer for belt pulley	1970303
74	3006425	Oil filter	1970304
75	2405992	Worm support	1970305
80	4300370	Screw M 10 x 40	1976911
81	2-00213	Washer d 10.5 (4300155)	1641100
82	2-00372	Screw M 8 x 16 (4300019)	1530093
83	2-00715	Screw M 6 x 12 (4300065)	1524041
84	2-00111	Nut M 6 (4300132)	1555060
85	2-00372	Screw M 8 x 16 (4300019)	1530093
87	2-01037	Screw M 10 x 30 (4300029)	6411500
88	2-00380	Screw M 10 x 25 (4300028)	1530118
89	2-00113	Nut M 10 (4300134)	1555100
90	2-01194	Low nut M 16 x 1.5 (4300125)	1556161
93	2-71734	Split pin d 6 x 18 (4300207)	1684067
94	2-00983	Split pin d 6 x 20 (4300208)	1684068
95	2-71928	Split pin d 8 x 32 (4300211)	1684087
96	2-01172	Screw M 8 x 130 (4300075)	1970310
97	2-02634	Screw M 18 x 1.5 x 50 (4300055)	1970311
98	2-00412	Screw M 6 x 35 (4300016)	1530077
99	2-01038	Washer d 20 (4300160)	1641210
103	2-01248	Washer d 24 (4300161)	1970312
104	2-01032	Screw M 14 x 30 (4300049)	1530171
105	2-71925	Screw M 16 x 100 (4300054)	1524148
106	2-00663	Low nut M 16 (4300124)	1555160
108	4206933	Gasket DAS 6044	1970215
109	4206932	Dust cover PW 30	1970216
110	4206931	Gasket RS 3040	1970217
111	4206930	O-ring 227	1970218
112	3006929	Ring nut	1970314
113	4206928	O-ring 018	1970219
115	3006926	Spacer	1970316
116	2-91674	Self-locking nut M 22 x 1.5 (4300265)	1556221
117	2-01006	Screw M 6 x 8 (4300064)	1970317
121	3006653	Label	1972182
122	3006654	Label	1972140
123A	3006601	Belt cover (up to mach. 1011-03/02)	1970914
123B	3020241	Belt cover (from mach. 1012-03/02)	1976939
124	3006525	Washer d 81 x 105 x 1	1970894
125	3006524	Washer d 81 x 105 x 0.5	1970893
126	2201893	Motor support with cover	1976936

<b>No.</b>	<b>Part No.</b>	<b>Description</b>	<b>HWT No.</b>
128	2-01299	Washer d 8 x 24 x 2 (4300165)	1640080
130	3006743	Support for cylinder protection	1972183
132	3006744	Cylinder protection	1972184
133	3006407	Label	1972281
138	2-01267	Screw M 8 x 12 (4300018)	1530091
139	3005979	Hub bush	1970857
140	2406718	Special cover for self-centering chuck cylinder	1972191
142	3007041	Cylinder casing	1972192
143	2-71883	Split pin d 4 x 35 (4300183)	1681019
144	3006548	Washer d 49 x 30 x 3	1972193
145	3007036	Short cylinder shaft	1970298
147	2108605	Frame	1970373
148	2008636	Carriage	1972194
149	2408640	Tool holding arm	1970346
150	3008652	Arm bar	1972195
151	2108627	Sliding table	1972196
152	3008848	Long cylinder shaft	1972197
153	2108656	Equipment support	1972198
154	2200798	Bolt for chuck arm	1972186
157	3008825	"HOFMANN" label	1970740
158	2-71383	Screw M 10 x 40 (4300031)	1530121
159	4300121	Screw 5.38 x 19.05	1972124
160	3008849	Cylinder casing	1972189
161	2208688	Self-centering chuck arm	1970365
162	2-00373	Screw M 8 x 20 (4300020)	1530094
163	4207404	Cable holder	1970826
165	3306135	Oil cap	1970370
166	2-00379	Screw M 10 x 20 (4300027)	1530117
167	3008234	Long cylinder cover	1972188
168	2-00359	Screw M 6 x 10 (4300010)	1530071
169	2-71544	Washers d 6 (4300170)	1644006
170	2-71733	Split pine d 10 x 20 (4300213)	1684099
171	3008555	Short hose for long cylinder	1972181
172	3010062	Felt ring	1972180
173	4211478	Greaser M 6	1972126
174	3094606	Washer	1972178
175	2311723	Head tool	1972158
176A	2-71527	Self-locking nut M 20 x 1.5 (up to mach. no. 418-06/95) (4300378)	1972232
176B	2-71528	Self-locking nut M 27 x 2 (from mach. no. 419-06/95) (4300548)	1972389
177A	3009493	Spring hook (up to mach. no. 418-06/95)	1972166
177B	3014287	Spring hook (from mach. no. 419-06/95)	1972390
178	3009491	Head tool fulcrum	1972157
179A	2201159	Tool holder (up to mach. no. 418-06/95)	1972320
179B	2314277	Tool holder (from mach. no.. 419-06/95)	1972392
180	4210271	O-ring 333	1972165
181	3012063	Washer d 40 x 59.5 x 0.8	1972176
182	2200667	Bead breaker disk	1972162

<b>No.</b>	<b>Part No.</b>	<b>Description</b>	<b>HWT No.</b>
183A	3009487	Head tool fulcrum pin (up to mach. no. 418-06/95)	1972164
183B	3014286	Head tool fulcrum pin (from mach. no. 419-06/95)	1972394
184	2-00034	Seeger ring d 30 (4300377)	1976530
185	3008650	Bolt for chuck arm	1972187
186	3010805	"MONTY 4200" label	1972175
187	3013825	"MONTY 4200" label	1972174
188	2413893	Spring casing	1972173
189	3013896	Spring d 14 x 600	1972172
190	3013895	Spring	1972171
191	3013892	Flask	1972170
192	3013891	Ring nut	1972169
193	3013884	Shaft	1972168
194	3013867	Spacer	1972167
195	2-00362	Screw M 6 x 20 (4300013)	1530074
196	3013871	Pawl	1972161
197	3013886	Pawl	1972159
198	4214064	Cap d 20	1972148
199	3310221	Buffer	1972143
202	4206388	Gasket DAS 140115	1970319
203	3006016	Piston d 140	1970320
205	3005942	Self-centering chuck cross	1970322
206	3005941	Clamp support	1970323
207	2200387	Clamp	1970010
208	2406418	Self-centering chuck arm	1970324
209	3006427	Stabilization bar	1970325
210	3006383	Self-centering chuck connecting rod	1970326
211	2200388	Self-centering chuck connecting rod shaft	1970327
212	4206404	Gasket PW 40/G	1970220
214	3006372	Key	1970239
215A	3007621	Helicoidal gear (up to mach. no. 654-03/98)	1970330
215B	3015950	Helicoidal gear (from mach. no. 655-03/98)	1972338
216A	3005999	Front flange for cylinder d 140 (up to mach. no. 654-03/98)	1970331
216B	3015949	Front flange for cylinder d 140 (from mach. no. 655-03/98)	1972342
217	4206403	O-ring 366	1970221
218	4206396	O-ring 252	1970222
219	4206394	Guide WRI 40	1970332
220	4206395	Gasket RS 4052	1970223
221	2406408	Cylinder d 140	1970333
222	4206390	O-ring 213	1970224
223	2306569	Complete revolving union pin	1972212
225	4206392	Full gasket DRS 2028	1970336
228	3005194	Washer d 8.1 x 26.5 x 4	1970858
231	3006263	Self-centering chuck cylinder hose	1970225
232	2200753	Self-centering chuck cylinder hose	1972213
233	3006359	Washer	1970862
234	3006017	Driven pulley	1970403
235	3006384	Driven pulley spacer	1970404

<b>No.</b>	<b>Part No.</b>	<b>Description</b>	<b>HWT No.</b>
236	2-01034	Bearing 25/52/15	1970405
237	4100007	Bearing 25/47/15	1970406
238	3006379	Bearing spacer	1970407
239	2-00716	Key 7 x 8 x 30 (4300195)	1692063
240	2201161	Worm screw	1972336
241	3006374	Special screw M 12	1530153
242	3006375	Long special screw M 12	1530158
243	3006373	Short special screw M 18 x 1.5	1970408
244	2200386	Average special screw M 18 x 1.5	1970409
245	2200383	Long special screw M 18 x 1.5	1970410
246	2-00863	Screw M 6 x 30 (4300067)	1524045
247	2-01772	Screw M 10 x 60 (4300032)	1530126
249	2-71426	Screw M 10 x 16 (4300026)	1530116
250A	3010253	Washer d 38 x 16.2 x 7 (up to mach. no. 635-12/97)	1972276
250B	3015726	Washer d 20.2 x 38 x 7 (from mach. no. 636-12/97)	1972335
251	2-00047	Split pin d 3 x 30 (4300182)	1681014
252	2-02787	Low nut M 27x 2	1970412
253	2-01021	Self-locking nut M 12 (4300147)	1555120
254	2-01242	Self-locking nut M 18 x 1.5 (4300148)	1557182
255	2-01191	Screw M 10 x 25 (4300077)	1540081
256	2-02529	Low nut M 33 x 2	1970414
257	2-00214	Washer d 12 (4300156)	1641130
258	4206389	O-ring 216	1970227
259	2310447	Rotating joint	1972214
260	3006801	Support for manometer	1972216
261	3006804	Hose for manometer	1972217
262	4294656	L-union 1/4"	1485106
263	2-02562	Screw M 8 x 35 (up to mach. no. 654-03/98) (4300522)	1972221
264	3008639	Chuck control bar	1970377
266	2-00112	Nut M 8 (4300133)	1555080
267	2-00605	Screw M 4 x 10 (4300089)	1506063
268	2-71506	Nut M 4 (4300254)	1555040
270	3008885	Label	1972226
273	2-00821	Seeger ring d 18 (4300243)	1972227
274	4300516	Seeger ring d 50	1972230
275	4210251	Manometer	1972208
276	4213210	Nipple 1/4" - 1/4"	1972233
277	3009404	Self-centering chuck hose	1972345
278	2413969	Short hose	1972201
279	2413967	Long hose	1972202
280	4210089	Union 1/4"	1972248
281	2313966	Non-return valve	1972203
282	3013915	Chuck cover	1972209
283	2115944	Plate	1972344
284A	2-00663	Low nut M 16 (up to mach. no. 635-12/97)	1555160
284B	2-91794	Low nut M 20 x 1.5 (from mach. no. 636-12/97) (4300268)	1556201
285	4220214	Special washer 10.2 x 22 x 1.25	1976910

<b>No.</b>	<b>Part No.</b>	<b>Description</b>	<b>HWT No.</b>
286	2201949	Complete chuck	1976912
287	4219344	Bush 40 x 44 x 20	1976913
288	4219338	Gasket for shaft d 40	1976914
289	4219343	O-ring 3.53 x 72.82	1976915
290	4219341	Safety washer d 70	1976916
291	4219340	Locking ring nut M 70 x 2	1976917
292	2201950	Front flange for cylinder d 140	1976918
293	4219353	Copper washer 1/8"	1976919
294	4219352	Nipple 1/8"	1976920
295	3019234	Chuck control bar	1976921
296	4219337	Gasket d 140	1976922
297	3019235	Piston d 140	1976923
298	4219682	Guide for piston d 140	1976924
299	3019248	Casing d 140 x 188.5	1976925
300	2201951	Rear flange for cylinder d 140	1976926
301	3019738	Special screw M 10 x 240	1976927
302	4219845	Special nipple 1/4" - 1/4"	1976928
303	2019846	Complete revolving union pin	1976929
304	3019739	Chuck cylinder hose L=210 mm	1976930
305	2-01257	Self-Locking nut M 6 (4300144)	1557061
306	2-00309	Screw M 6x16 (4300508)	1976566
402	4212757	Plug 16A	1972245
405	4207021	Electric valve 3-pole socket	1970420
407	4206955	Complete warning light	1970228
411	4206954	Avalanche diode	1970229
412	4206953	Rectifier bridge	1970230
414	4207026	Fuse 3.15A	1970426
420	4206950	Remote control switch	1970963
422	3006499	Solenoid cover	1970431
423	3006507	Spacer for solenoid cover	1972134
424	4206948	Self centering chuck control double solenoid	1970234
425	4206947	Arm cylinder control double solenoid	1970235
427	4206945	Unloading solenoid	1970237
428	4206944	Pressure limit valve	1970238
429	4206912	Adjustable reduction valve	1970432
431	4206942	Manometer	1970240
432	3011360	Oil plug	1970433
433A	3-01060	Hydraulic unit motor 220/380V. 50Hz. (4206503)	1970434
433B	3-01055	Hydraulic unit motor 220/380V. 60Hz. (4294701)	1970176
434A	4207030	50Hz pump	1970435
434B	4207905	60Hz pump	1970467
435	4207031	Oil outlet cap	1970436
436	4207032	Plug aluminum washer	1970437
437	4207033	Oil filler warning light	1970438
440	2200363	Handler micro-switch	1970440
441	3006466	Switch support	1970441
442	4206467	Switch changing pole	1970241

<b>No.</b>	<b>Part No.</b>	<b>Description</b>	<b>HWT No.</b>
446	4206470	Rudder pedals micro-switch	1970242
451	4206956	Terminal board	1970448
452A	3306007	Rudder pedals terminal (up to mach. no. 474-12/95)	1970449
452B	3314594	Rudder pedals terminal (from mach. no. 475-12/95)	1972405
453	3006652	Label	1972118
456	2-00211	Washer d 6 (4300153)	1641060
457	2-00112	Nut M 8 (4300133)	1555080
458	2-02575	Screw M 5 x 100 (4300062)	1524038
459	2-00210	Washer d 5 (4300152)	1641050
462	2-00209	Washer d 4 (4300151)	1641040
463	2-71491	Screw 3.58 x 12.7 (4300115)	1532253
464	2-00576	Screw M 3 x 20 (4300238)	1506051
465	2-71505	Nut M 3 (4300129)	1555030
470	2407586	Feeding cable	1970974
471	2407587	Cable for hydraulic unit motor	1970483
472	2407588	Cable for self-centering chuck motor (1-2-3)	1970482
473	2407589	Cable for self-centering chuck motor (U-V-W)	1970481
474	2407590	Cable for solenoid	1970480
475	4207591	Switch changing pole	1970214
478A	2200367	Transformer (up to mach. nr. 585 -04/97)	1970477
478B	2201131	Transformer (from mach. nr. 586 -05/97)	1972303
481	3007594	Box key	1970962
482	2407595	Ground cable	1970964
484	4207596	Switch with cover	1972311
485	3007598	Hydraulic tank	1972246
486	4207599	Filter	1970396
487	3007600	Hose	1972247
488	3007601	Hose	1972251
489	3007602	Solenoid support	1972252
490	3-00141	Nipple 1/4" - 1/4" (4294640)	1486187
491	4207603	Nipple 3/8" - 1/4"	1972253
492	2-00312	Screw M 6 x 25 (4300241)	1524044
493	3007604	Base for hydraulic unit	1972254
495	2-71506	Nut M 4 (4300254)	1555040
496	2-71541	Tooth washer d 4 (4300169)	1644004
498	2-00212	Washer d 8 (4300154)	1641080
500	2-71542	Tooth washer d 8 (4300171)	1644008
505	9415012	Lamp 30V. 2W.	1972255
506	9429692	Fuse 1A T	1972256
507A	4212540	Fuse 16A (for 380/415V-3Ph.-50/60Hz power supply)	1972257
507B	4212589	Fuse 25A (for 220/240V-3Ph.-50/60Hz power supply)	1972258
508A	2200865	Safety switch (calibrated for 380V-3Ph.-50Hz power supply)	1972260
508B	2200866	Safety switch (calibrated for 380V-3Ph.-60Hz power supply)	1972262
508C	2200867	Safety switch (calibrated for 220V-3Ph.-50Hz power supply)	1972268
508D	2200868	Safety switch (calibrated for 220V-3PH-60HZ power supply)	1972269
508E	2200869	Safety switch (calibrated for 240V-3PH-50HZ power supply)	1972270
508F	2200870	Safety switch (calibrated for 240V-3PH-60HZ power supply)	1972271

<b>No.</b>	<b>Part No.</b>	<b>Description</b>	<b>HWT No.</b>
508G	2200871	Safety switch (calibrated for 415V-3PH-50HZ power supply)	1972272
508H	2200872	Safety switch (calibrated for 415V-3PH-60HZ power supply)	1972273
509	4212834	Copper Washer 3/8"	1972346
510	4212799	Union 3/8"-1/4"	1972347
511	4216266	Flexible coupling	1972348
512	4216267	Coupling star	1972350
513	4216268	Pump flexible coupling	1972362
514	3014779	Tie rod for electric valve	1972313
515	2-71755	Screw M 5 x 50 (4300374)	1972314
516	3016095	Transformer	1972411
517	3016096	Rectifier bridge with diode	1972412
518A	2201264	Fuse bag (380/415/440 V)	1972413
518B	2201268	Fuse bag (220/240 V)	1972415
519	3014778	Electric valve spacer	1972312
520	4219943	Box key	1977261
521	3019919	Transformer	1972365
522A	2201862	Safety switch 4-6.3A	1976888
522B	2201863	Safety switch 6.3-10A	1976889
523A	4219923	Remote control switch 400V-3Ph-50/60Hz	1972366
523B	4220106	Remote control switch 230V-3Ph-50/60Hz	1976890
524	2120065	Cable for self-centering chuck motor	1976891
525	3019691	Electric box support plate	1976892
526	2-02996	Screw M 10 x 70	1976893
527	3019696	Spacer d 11 x 20 x 53	1976894
528	2201785	Fuse bag	1972364
529	4219925	Complete warning light	1977259
530	4219926	Switch with cover	1977260
531	4220066	Switch changing pole	1976895
532A	3-01048	Hydraulic unit motor 230/400V-3Ph-50Hz (4219564)	1976896
532B	3-01049	Hydraulic unit motor 230/400V-3Ph-60Hz (4219565)	1976897
533	2-00375	Screw M 8 x 30 (4300022)	1530097
534	3019952	Motor flange	1977267
535	4210715	Key 8 x 40	1972327
536	2-00321	Screw M 8 x 25 (4300072)	1976546
537	3019953	Coupling	1977268
538	4211366	Valve	1972337
539	3019959	Pump flange	1977275
540	4220230	Valve	1976898
541	4219964	O-ring 14 x 2.5	1977277
542	4219965	O-ring 3.53 x 114.56	1977278
543	3019951	Spacer	1977266
544	2201889	Suction/discharge kit	1976899
545	4300405	Screw M 5 x 30	1976900
546	4220231	Adjustable reduction valve	1976901
547	4210740	O-ring 2.62 x 17.86	1976716
548	4219957	Oil plug	1977273
549	2-01197	Screw M 8 x 110	1977276



<b>No.</b>	<b>Part No.</b>	<b>Description</b>	<b>HWT No.</b>
550A	4220221	50Hz pump	1976902
550B	4220222	60Hz pump	1976903
551	2119690	Support plate	1976904
552	4220229	Oil outlet cap	1976905
553	3019688	Solenoid cover	1976906
554	4220218	Electric valve	1976907
555	4220219	Electric valve	1976908
608	2105954	Bead lifting lever	1970460
609	3006365	Rim lever	1970459
610	2105943	Bead guide lever	1970461
611	2005957	Bead clamp	1970463
612	2-00837	Screw M 10 x 25 (4300110)	1972406
613	3012821	Washer for mounting roll	1972296
614	2412820	Mounting roll	1972297
615	2412828	Roll shaft	1972298
616	2306040	Complete mounting roll	1970003
617	4206824	Adjusting screw	1972420
618	2406000	Bead clamp	1972418
619	2306041	Complete bead clamp (1 piece)	1972416
620	2306808	Bead clamp for alloy rim	1970006
621	2306825	Additional jaw for alloy rim (1 piece)	1970469
624	2-00801	Screw M 6 x 6 (4300280)	1975091
625	3308332	Insert for upper plier	1972403
626	3008331	Coupling for lower plier	1972404
627	2-00928	Screw M 12 x 40 (4300040)	1972299
628	3007485	Clamp lock	1970889
629	3007484	Sector clamp	1970888
630	3008684	Extension for self-centering chuck	1972300
631	3005340	Special screw M 8	1970144
632	2308734	Complete extension for self-centering chuck	1973002
633	4209208	Lubricating pump	1970472
634	4211479	Lubricating pump	1972301
635	3306728	Plastic insert	1972302
636	3018604	Special screw M 8 x 30	1976909
640	2405960	T-Handle	
800	2406840	Control console	1970947
801	2406848	Cover for pedal unit	1970922
802	2307719	Complete pedal	1970952
803	3006047	Pedal spring	1970125
804	3006846	Micro control lever	1970955
805	3006859	Pedal spacer	1970950
806	3306847	Gasket	1970953
807	3307175	Gasket	1970944
808	4205568	O-ring 16.02 x 10.78 x 2.62	1970951
809	4207015	Screw M 4 x 14	1538004
810	3306832	Bellows	1970959
811	3307057	Switch cover	1972373

<b>No.</b>	<b>Part No.</b>	<b>Description</b>	<b>HWT No.</b>
812A	3007605	Connecting lead for control hose (up to mach. no. 968-09/01)	1972374
812B	3020865	Connecting lead for control hose (from mach. no. 969-09/01)	1976932
813	3007606	Cable harness for control hose	1970946
814	3007607	Control lever cap	1970945
815	3006651	Label	1972377
816	3006650	Label	1972378
817A	3007608	Lead for microswitch (up to mach. no. 968-09/01)	1970956
817B	2120867	Lead for microswitch (from mach. no. 969-09/01)	1976933
818	3007609	Ground cable	1970949
820	2-00208	Washer d 3 (4300150)	1641030
821	2-00350	Screw M 4 x 16 (4300256)	1530033
822	2-01252	Screw M 4 x 35 (4300006)	1530035
823	2-00348	Screw M 4 x 10 (4300257)	1530031
824	2-00364	Screw M 6 x 30 (4300258)	1530076
825	2-00320	Screw M 8 x 20 (4300071)	1524060
827	2-00359	Screw M 6 x 10 (4300010)	1530071
828	3007906	Micro-switch fixing plate	1970943
829	3006649	Label	1972391
830	3010687	Left micro square	1972398
831	3010686	Right micro square	1972393
832	2-71547	Tooth washer d 3	1977154
833	2-00880	Screw M 3 x 14 (4300286)	1972274
834	3013971	Plate	1972275
835	4214397	Bipolar switch changing pole	1972280
836	3306466	Switch support	1972282
837	3013907	Switch cover	1972284
838	4219231	Control switch	1977292
839	3319236	Switch cover	1977288
841	2119968	Cable with diode	1977298
842	4219575	Micro-switch protection	1977290
843	2119241	Control console	1977297
844	2-02354	Screw M 4 x 20	1977301
845	2-00662	Screw M 4 x 8	1977299
846	2-02355	Screw M 4 x 30	1977302
847A	2119967	Internal cable for control console (up to mach. no. 968-09/01)	1977289
847B	2120866	Internal cable for control console (from mach. no. 969-09/01)	1976934
848A	4219716	Terminal board (up to mach. no. 968-09/01)	1977293
848B	2120828	Terminal board (from mach. no. 969-09/01)	1976935
849	2119294	Cover for pedal unit	1977287
850	2-00790	Screw M 4 x 10	1977296
851	3019225	Micro square	1977294
852	2-00606	Screw M 4 x 16	1977300
853	4219227	Micro-switch	1977295
1000	2006037	Mounting head assy	1970002
1010	2200552	Control switch assy. with bellows	1972109
1011A	2200873	Complete electric unit 380/415V-3PH-50/60HZ	1972285
1011C	2200875	Complete electric unit 220/240V-3PH-50/60HZ	1972287

<b>No.</b>	<b>Part No.</b>	<b>Description</b>	<b>HWT No.</b>
1012	2201626	Mobile control console assy.	1970487
1013	2200236	Complete self-centering chuck cylinder	1970375
1014A	2006827	Complete 50Hz hydraulic unit	1970392
1014B	2006828	Complete 60Hz hydraulic unit	1970393
1015	3006498	Complete short cylinder	1434233
1016	3008653	Complete long cylinder	1970351
1017	2200438	Complete chuck	1970383
1018	2011376	Complete double head tool	1972205
1019	2310256	Complete revolving union	1972250



**HOFMANN USA**

309 Exchange Ave. Conway, AR 72032 Phone 800-251-4500 Fax 501-450-2085

[www.hofmann-usa.com](http://www.hofmann-usa.com)

**HOFMANN BALANCING TECHNIQUES LTD. CANADA**

6500 Millcreek Dr. Mississauga, Ontario L5N 4G4 Phone 800-267-2185 Fax 905-821-2073

[www.hofmann.ca](http://www.hofmann.ca)

Edition 03/02 Revised 08/09